

### Gabriel Orozco

19 January – 25 April 2011  
(Press view: 18 January 2011)

TATE MODERN



Gabriel Orozco *La DS* 1993. Fonds national d'art contemporain, Puteaux, France  
© Courtesy of the artist. Photo: Florian Kleinellenn

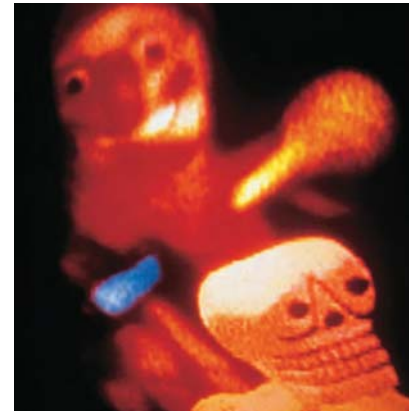
This retrospective of the leading Mexican artist Gabriel Orozco (b 1962) will be the largest presentation of his most critically acclaimed works. Orozco draws on the histories of western and Latin American art practice with his relentless innovation and experimentation. His diverse sources, resulting from an itinerant life, will be reflected in the past 25 years of work. Featuring a new installation never previously exhibited, the survey will also highlight Orozco's substantial production of sculpture, photography, drawing and painting. Among the key early works to be included are *La DS* 1993, a sliced and streamlined Citroën DS, and *Carambole with Pendulum* 1996, a rounded billiard table with a suspended red ball. Also on display will be the series of photographs from the Tate Collection, *Until You Find Another Yellow Schwalbe* 1995, documenting the artist's game-based process of making work, and *Polvo Impreso* 2002, a series of lace-like sheets of dusty lint transposed into etchings.

Exhibition organised by The Museum of Modern Art, New York  
in association with Tate Modern

### Susan Hiller

1 February – 15 May 2011  
(Press view: 31 January 2011)

TATE BRITAIN



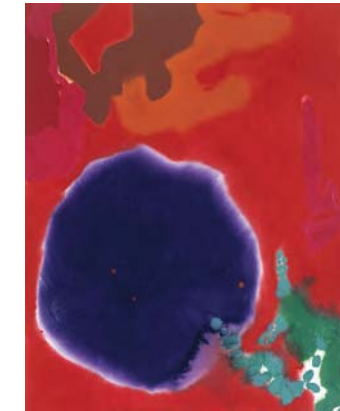
Susan Hiller *An Entertainment* 1990 © Susan Hiller

Born in the United States in 1940, Susan Hiller has lived and worked in Britain for over 30 years and is one of the most influential artists of her generation. This major survey exhibition will provide a timely focus on a selection of her key works, from assembled postcard images made in the 1970s to her pioneering mixed-media installations and video projections. The exhibition will focus on Hiller's interest in the subconscious or unconscious mind, whether in the form of dreams and memories or as supernatural or visionary experiences. Highlights include the menacing video installation *An Entertainment* 1990 and the compelling audio-sculpture *Witness* 2000, alongside many other examples of her extraordinary and diverse practice.

### Watercolour

16 February – 21 August 2011  
(Press view: 14 February 2011)

TATE BRITAIN



Patrick Heron *January 9: 1983: II* 1983  
© Estate of Patrick Heron. All Rights Reserved, DACS 2002

*Watercolour* takes us back to the origins of watercolour in the form of medieval illumination and traces its history thereafter, showing how the increasing portability of the medium allowed artists to travel with their paints to far-flung regions, documenting what they saw, from new fauna and flora to on-the-spot recording of new landscapes and events. Before the advent of photography, watercolour was the medium of choice for eye-witness evidence. Acknowledging the association of watercolour with British artists such as William Blake, JMW Turner and Thomas Girtin, and examining it within a modern and contemporary context in the work of artists such as Patrick Heron and Tracey Emin, the show goes much further in presenting a medium which has long had a huge range and appeal; for amateurs and professionals, for show and for intimacy, for realistic representation and for hallucinatory or abstract creation.

The exhibition is part of the Great British Art Debate supported  
by The National Lottery through the Heritage Lottery Fund

## Nam June Paik

17 December 2010 – 13 March 2011  
(Press view: 16 December 2010)

TATE LIVERPOOL



Nam June Paik *Robespierre* from the portfolio *Evolution/Revolution/Resolution*, 1989 © Estate of Nam June Paik

Nam June Paik (1932–2006) was one of the most innovative artists of the twentieth century, and is widely considered to be the first video artist. The first major survey of Paik's work in the UK, this exhibition traces the artist's avant-garde spirit and the experimental nature of his production throughout his career. Beginning in December 2010 the exhibition will continue until 13 March 2011.

Exhibition initiated and developed in collaboration with museum kunst palast, Düsseldorf. Exhibition in Liverpool organised with FACT (Foundation for Art and Creative Technology)

## Simon Starling

5 February – 2 May 2011  
(Press view: 4 February 2011)

TATE ST IVES



Simon Starling *Autoxylopyrocycloboros* 2006  
© Courtesy the artist and The Modern Institute, Glasgow

Tate St Ives presents the first major exhibition in the UK of the work of Simon Starling since he won the Turner Prize in 2005. This exhibition draws on works all made in the last five years, in addition, Starling will present a new work commissioned especially for the show.

Starling's work reveals rich, unexpected and complex histories, through his forensic unravelling of an idea, image or event. The show at Tate St Ives will present important recent works in the particular context of rural Cornwall, emphasising Starling's recurrent interest in the relationship and interplay between culture and nature, and his examination, excavation and transformation of the material world.

In collaboration with the Contemporary Art Centre, Malaga

## Design Research Unit

5 February – 2 May 2011  
(Press view: 4 February 2011)

TATE ST IVES



Misha Black with Herbert Read and other members of the Design Research Unit c. 1945

Alongside the Simon Starling exhibition, Tate St Ives will present a special display about the Design Research Unit. Established in 1943 by Herbert Read and Marcus Brumwell, the influential designer who lived in Cornwall, this was one of the first generation of British design consultancies. It forged pioneering links between art, design and industry, bringing expertise in architecture, graphics and exhibition displays to its work on the 1951 Festival of Britain and the iconic post-war corporate design for British Rail and Watney pubs and brewery. The display will feature work by the group's influential designers Misha Black and Milner Gray, alongside associates that included Sadie Speight, Jock Kinneir and Richard and Su Rogers. It draws on material from Tate Archive, including records of the DRU's first project that saw Naum Gabo commissioned to design the body and interior of a car.

This exhibition is a Cubitt touring exhibition

## Joan Miró: The Ladder of Escape

14 April – 11 September 2011  
(Press view: 12 April 2011)

TATE MODERN



Joan Miró *May 1968 1968–1973* © Joan Miró and Fundació Joan Miró, Barcelona

This major review of one of the twentieth century's greatest artists, Joan Miró (1893–1983), will be the first retrospective of his work to be held in London for almost 50 years. Focusing on his political engagement, the exhibition sets out to examine the anxious and radical nature of his work, from *The Head of a Catalan Peasant* 1925 to *Triptych to the Hope of a Condemned Man* 1974. Alongside the serenity that suffuses much of his painting, *Joan Miró: The Ladder of Escape* will reveal a passionate ferocity that reflects the political uncertainties of the artist's lifetime. The exhibition will include key early works concerned with the land of Catalonia, and will go on to explore Miró's responses to the Spanish Civil War and the fall of France between 1935 and 1941, as well as the euphoria over the decline and demise of Franco's regime from 1968 to 1975.

Organised by Tate Modern and the Fundació Joan Miró, Barcelona, in association with the National Gallery of Art, Washington

## James Stirling

April – August 2011  
(Press view tbc)

TATE BRITAIN



Clore Gallery © Photo: Tate.

It is eighteen years since James Stirling's death, and he is long due a retrospective exhibition. Given his close association with Tate, in the form of the Clore Gallery and Tate Liverpool, Tate Britain is an especially appropriate place to review his work. This exhibition, curated by the renowned architectural writer Anthony Vidler, draws on the Stirling archive held at the Canadian Centre for Architecture in Montreal. It will be presented in the Clore Gallery, designed by Stirling and opened in 1987. Unfashionable at the time, it, like its designer, is the subject of renewed interest and appreciation. The exhibition will cover the whole of Stirling's career, from the iconic Engineering Building of 1959 at Leicester University through to the late 1990s, including built and unbuilt projects, drawings, photographs and furniture.

Organised by the Canadian Centre for Architecture, Montreal and Yale Center for British Art, New Haven, in association with Tate Britain and the Staatsgalerie, Stuttgart

## The Vorticists: Manifesto for a Modern World

14 June – 4 September 2011  
(Press view: 13 June 2011)

TATE BRITAIN



Wyndham Lewis *Workshop* circa. 1914-5  
© Wyndham Lewis and the estate of Mrs G A Wyndham Lewis  
by kind permission of the Wyndham Lewis Memorial Trust

Vorticism was one of the truly avant-garde movements in Britain. The group was named by American poet Ezra Pound, led by the painter Wyndham Lewis and included sculptors Henri Gaudier-Brzeska and Jacob Epstein and painters William Roberts, Helen Saunders and Edward Wadsworth. These artists embraced the maelstrom of the modern world, their movement's name reflecting its position at the still centre of the vortex of modernity.

The originality of this exhibition lies in its focus on the only two exhibitions in the lifetime of the Vorticist group: one in London in 1915 and the other in New York in 1917. It also highlights the group's journal *BLAST*, the design of which still seems shocking and original, and the rarely seen Vortographs of Alvin Langdon Coburn, claimed as the first abstract photographs, which were shown in London in 1917. This exhibition will set the movement in the wider historical and cultural contexts of early twentieth-century London.

Co-organised by the Nasher Museum of Art at Duke University, the Peggy Guggenheim Collection and Tate Britain

## René Magritte: The Pleasure Principle

24 June – 16 October 2011  
(Press view: 22 June 2011)

TATE LIVERPOOL



René Magritte *La Représentation* 1937 © ADAGP, Paris and DACS, London 2010  
Courtesy National Galleries of Scotland

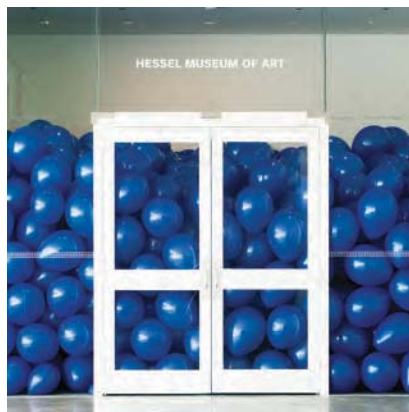
René Magritte (1898 to 1967) is one of the most revered and enduringly popular artists of the 20th century. The first major exhibition of his work in England in almost 20 years, *The Pleasure Principle* will display over 100 works from public and private collections around the world, many not before seen in the UK. The exhibition takes a fresh look at the work of the Belgian Surrealist, focusing on previously neglected aspects of his life and artistic practice. Exploring themes such as his inspiration by commercial design, appropriation of elements of popular culture and his time spent in London in 1937, key examples of Magritte's iconic image-text works and double portraits will feature.

In collaboration with Albertina, Vienna.

## Summer Season at St Ives

14 May – 25 September 2011

TATE ST IVES



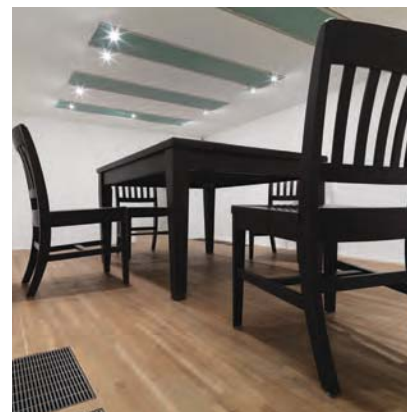
Martin Creed *Work No. 628* 2007 © Martin Creed Courtesy the artist,  
Hessel Museum of Art, NY and Hauser & Wirth Photo: Chris Kendall

Summer season 2011 at Tate St Ives brings an eclectic mix of modern and contemporary works to the galleries. Devised as a series of independent one-room displays, it will feature important works from the Tate Collection, as well as significant loans. Juxtaposing artists and works from different generations, the common emphasis will be on space, structure and light. Through the selection and installation of the works, the show will respond to the unique architecture and location of the galleries at Tate St Ives. The displays will include a room of late works by Agnes Martin, part of the ARTIST ROOMS collection; an iconic work by Martin Creed, *Work No 628 Half the Air in a Given Space* 2007, which will see the sea-facing galleries filled with hundreds of balloons; a selected display of the late Margaret Mellis's (1914–2009) paintings and constructions; as well as works by Naum Gabo, Roman Ondák and others.

## ARTIST ROOMS

Throughout 2011

TATE



Robert Therrien *No Title (Table and Four Chairs)* 2003  
© ARS, NY and DACS, London 2010

Displays and exhibitions from ARTIST ROOMS, the Collection donated by Anthony d'Offay jointly to Tate and the National Galleries of Scotland in 2008, will go on show at Tate's four sites in London, Liverpool and St Ives, the National Galleries of Scotland and at a number of UK galleries and museums throughout 2011, with thanks to the support of national fundraising charity the Art Fund and the Scottish Government.

ARTIST ROOMS - Acquired jointly with National Galleries of Scotland through The d'Offay Donation with assistance from the National Heritage Memorial Fund and the Art Fund 2008.

### Gerhard Richter: Panorama

6 October 2011 – 8 January 2012  
(Press view: 4 October 2011)

TATE MODERN



Gerhard Richter *Reader* 1994 © Gerhard Richter  
Courtesy San Francisco Museum of Modern Art.

This will be the first major retrospective of the work of Gerhard Richter (b 1932) in London for over twenty years. The exhibition will be a chronological display grouping works into important phases of Richter's career. It will include his photo-paintings (1962–7), early experiments with landscapes and cityscapes (1967–9), *October 18 1977* (1988), a sequence of paintings based on images of the Baader-Meinhof group, and his squeegee paintings of the 1990s. The show will be punctuated by three glass constructions made in 1967, 1976 and 2002, and a room will be devoted to photographs, editions, prints, over-painted photographs and book spreads, showing the full variety of media in which Richter has worked. The exhibition will end with a room bringing together his most recent paintings, including *September 2005*, based on an image of the 9/11 attack.

Organised in collaboration with Neue Nationalgalerie, Berlin and Centre Pompidou, Paris

### The Unilever Series: artist tbc

11 October 2011 – 9 April 2012  
(Press view: 10 October 2011)

TATE MODERN



The Unilever Series: Miroslaw Balka *How It Is* 2009  
© Miroslaw Balka. Photo © Tate Photography

Tate Modern's annual commission for The Unilever Series continues in autumn 2011 with a new installation in the Turbine Hall. Launched in 2000 when Tate Modern first opened, The Unilever Series has introduced an audience of millions to some of the most memorable contemporary artworks of the past decade, created by artists of international renown including Louise Bourgeois, Anish Kapoor, Olafur Eliasson and Doris Salcedo. This will be the twelfth commission in the series, following Chinese artist Ai Weiwei's work for 2010.

### John Martin

21 September 2011 – 15 January 2012  
(Press view: 19 September 2011)

TATE BRITAIN



John Martin *The Great Day of His Wrath* (detail) 1851-3. Tate

John Martin (1789–1854) was a key figure in the nineteenth-century art world, renowned for his dramatic scenes of apocalyptic destruction and biblical disaster. While he was hugely popular, he remained something of an outsider, scorned by the art critics of his time.

Organised in partnership with the Laing, Newcastle, this major exhibition will be the first show dedicated to his paintings for over 30 years, and the largest display of his works seen in public since his death. Bringing together his most famous paintings from collections around the world, as well as previously unseen and newly-restored works, the exhibition will reassess this singular figure in art history, and reflect on the enduring influence of his apocalyptic art on painting, cinema and popular spectacle. The show will also examine how Martin's populism fits into the story of British art, and how his work connects with the culture of today.

The exhibition is part of the Great British Art Debate supported by The National Lottery through the Heritage Lottery Fund

## Barry Flanagan

27 September 2011 – January 2012  
(Press view: 26 September 2011)

TATE BRITAIN



Barry Flanagan *Four Casb 2 '67 1967* © Estate of Barry Flanagan

Barry Flanagan, who died in 2009, was one of Britain's most important and original artists. This exhibition re-evaluates Flanagan's position as a key figure in the development of British and international sculpture. Focusing on the artist's studio practice it will bring together works from 1964 to 1982. It will highlight how his sculptures emerged through the interaction of idea, form and process and will reflect his interest in, and engagement with literature, poetry and 'pataphysics'. The show will also demonstrate the vital impact these early works had on the development of Flanagan's hare sculptures. This will be the first major exhibition of Flanagan's work in London since 1983.

## Turner Prize 2011

21 October 2011 – 8 January 2012  
(Press view: 20 October 2011)

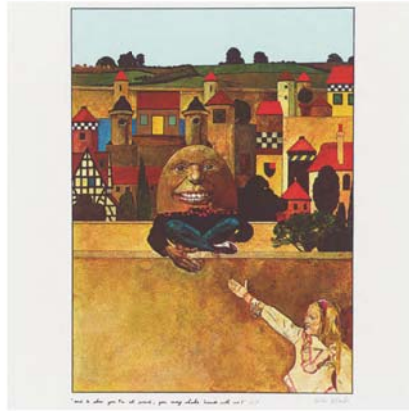
BALTIC GATESHEAD

This year the exhibition featuring the four shortlisted artists will be at BALTIC Centre for Contemporary Art in Gateshead. The winner of the *Turner Prize 2011* will be announced in December 2011

## Alice in Wonderland

4 November 2011 – 29 January 2012  
(Press view: 3 November 2011)

TATE LIVERPOOL



Peter Blake *'But isn't it odd? Tweedledum cried 1970*  
© Peter Blake. All rights reserved, DACS 2010

Lewis Carroll's classic Alice stories have inspired over 150 years of artistic responses. The starting point for the exhibition will be Carroll's original manuscript, written in 1864. A 'cabinet of curiosities' will provide a rare opportunity to see Carroll's photographic portraits of the Liddell family, Victorian children's games, paintings and moving images from the early 20th century. A major section will be devoted to the Surrealists with works by Max Ernst, René Magritte and Salvador Dalí, who saw the Alice books as an opportunity to shift towards a fantastical, unreal world. From the 1960s onwards, pop and conceptual artists such as Peter Blake and Duane Michals also took inspiration from the fascinating stories. This imaginative exhibition leads right up to the present day featuring works by Paula Rego, Fiona Banner and Mary Heilmann.

## The Indiscipline of Painting

8 October 2011 – 8 January 2012  
(Press view: 7 October 2011)

TATE ST IVES



Bernard Frize *Mal 25 2007* Courtesy of the artist

This international group exhibition explores how the history and legacy of modernist abstract painting continues to inspire painters and artists working today.

Focusing on abstraction's turn away from its expressionistic roots at the end of the 1950s - moving toward a more geometric, post-minimalist tradition - the show brings together work from the 1950s to the present, featuring major new commissions, loans and works from the Tate Collection. It includes important works by Frank Stella, Gerhard Richter and Andy Warhol, alongside other lesser known painters such as Blinky Palermo and Jeremy Moon. It goes on to trace these influences on contemporary practice with work drawn from subsequent generations of artists working in Britain, America, France and Germany.

*The Indiscipline of Painting* is a collaborative project between Tate St Ives and The Mead Gallery, Warwick

**Tate Modern  
Collection Displays**



Magdalena Abakanowicz *Abakan Red* 1969 © Magdalena Abakanowicz

Tate Modern continues its dynamic and innovative displays of Tate's Collection. They include significant new acquisitions, ARTIST ROOMS and iconic Tate works. The new changes to the Collection displays across Levels 3 and 5 will be completed by May 2011.

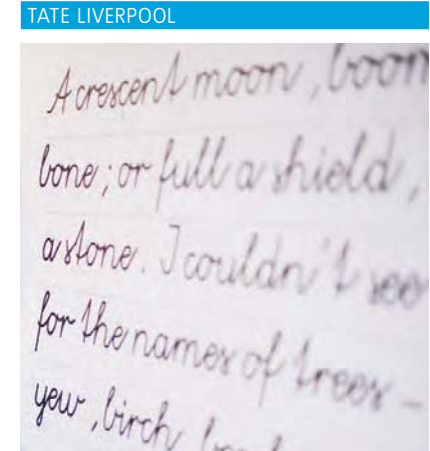
**BP British Art Displays  
1500-2011**



Henry Wallis *Chatterton* (detail) 1856 Tate Bequeathed by Charles Gent Clement 1899

An extensive rehanging of the BP British Art Displays will be presented in 2011, prompted in part by Tate Britain's building programme. As part of this, a new presentation in the Clore Gallery in August 2010 themed around *Romantics* will continue throughout 2011. This includes major works of British Romantic art, with rooms focused on Turner, Constable and Blake.

**DLA Piper Series:  
This is Sculpture**



Carol Ann Duffy (wall text detail), Tate Liverpool 2010 © Roger Sinek

The acclaimed *DLA Piper Series: This is Sculpture* continues to explore the trajectory of modern and contemporary art throughout the twentieth and twenty-first century by focusing on the expanded notion of sculpture. Co-curators from different cultural disciplines, including the current Poet Laureate Carol Ann Duffy, have developed new exciting visions for sculpture from the Tate Collection since the series opened in 2009, and new displays with further co-curators will be unveiled in 2011.

## Contemporary Highlights

### TATE BRITAIN

Throughout 2011 Tate Britain continues to showcase some of the most remarkable contemporary acquisitions including Mike Nelson's *Coral Reef*, a labyrinthine installation occupying an almost secret space at the heart of the gallery. Gerard Byrne's back-to-the-future film scenario *1984 and Beyond* and Mark Wallinger's spectacular *Threshold to the Kingdom*. Other artists to be highlighted in this period include Marc Camille Chaimowicz, Cerith Wyn Evans, Ceal Floyer, and Cathy Wilkes.

## Film Programme

### TATE MODERN

The 2011 film programme will include a major survey of Spain's experimental cinema since the 1950s, one of the first such projects to be shown outside Spain. It will also include a programme devoted to artists and experimental filmmaking from the Middle East, highlighting early and rarely-seen treasures as well as more recent work. Finally, a retrospective of Barbara Hammer's films will be accompanied by one of Hammer's early expanded cinema performances.

To view forthcoming screenings visit  
[www.tate.org.uk/modern/eventseducation/film](http://www.tate.org.uk/modern/eventseducation/film)

## Level 2 Gallery

### TATE MODERN

2011 will see a new programme of exhibitions in the Level 2 Gallery. Tate Modern's dedicated space for presenting the latest ideas and trends in the work of emerging international artists. The programme will feature a mix of solo shows and group exhibitions.

[www.tate.org.uk/modern/level2gallery](http://www.tate.org.uk/modern/level2gallery)

## Live Programme

### TATE MODERN

Over the last ten years, Tate Modern has pioneered a programme of live performance, realising an ambitious series of commissions, site-specific works and historical projects throughout the gallery spaces. The programme provides a unique platform for artists to experiment and collaborate, exploring visual art through interdisciplinary practices, including choreography, film and music.

To view the forthcoming live programme visit  
[www.tate.org.uk/modern/eventseducation/musicperform/](http://www.tate.org.uk/modern/eventseducation/musicperform/)